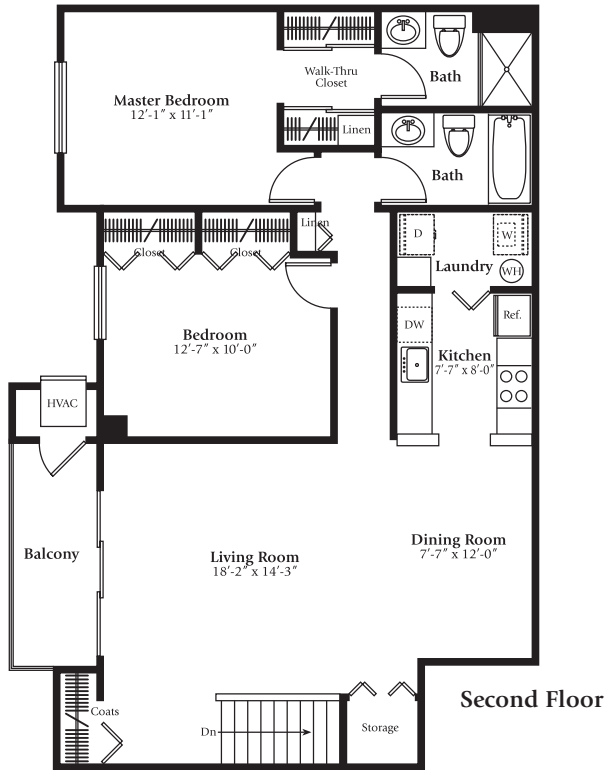
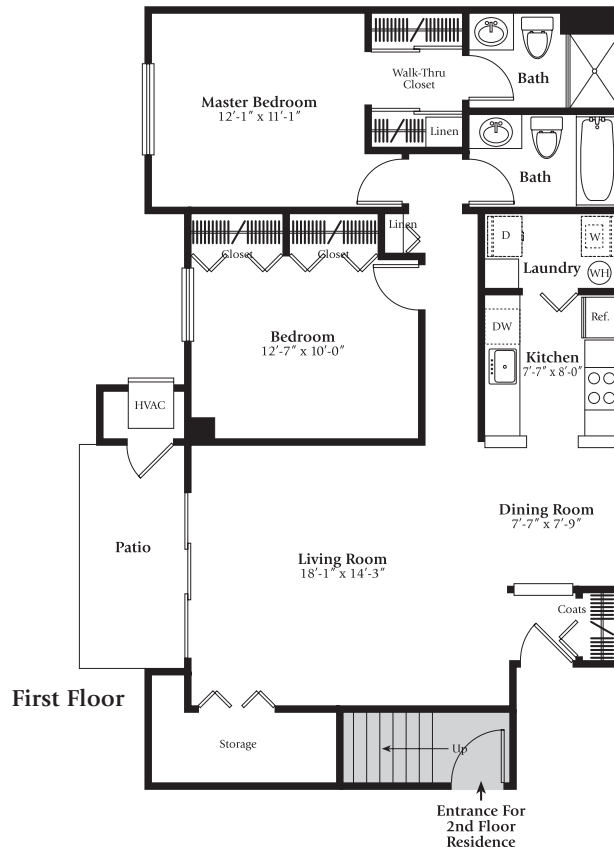


THE FOREST – 2 Bedroom, 2 Bath



- Refreshing outdoor living space and other features—a patio and easy entry for first floor apartments, and a balcony and for second floor apartments—deliver something for everyone.
- Generous storage and ample closet space make it easy to keep shared living areas welcoming and free of clutter.
- The Master suite’s large, walk-in closet opens into a private full bathroom—for perfect prep every day of the week.
- An additional bath provides privacy and retreat for the occupants of the second bedroom, as well as guests.
- Convenient laundry area off the kitchen makes multi-tasking a breeze, which adds up to more time doing the things you want to do.
- Deluxe appliance package and a countertop-height entrance provide a layout that creates a friendly sense of flow between the kitchen, dining area and living room for enhanced family communication or lively entertaining.



OFFICE: 5825 Plum Hollow Dr.
Ypsilanti, Michigan 48197
PHONE: 734-434-6650
FAX: 734-434-7538

ARBOR KNOLL

A P A R T M E N T S

Enjoy each day that opens and closes in Arbor Knoll's spacious living areas, thoughtfully appointed to enhance both convenience, and character.

Deluxe Conveniences

- Individually controlled heat and air conditioning
- Upscale appliance package including oven/range, dishwasher and refrigerator
- Convenient in-home laundry area with washer and dryer available

Superior Space

- Generous bedroom suites with walk-in closets and full baths (per plan)
- Airy kitchen with snack bar
- Extra large living areas
- Abundant storage and closet space

Ideal Setting

- Private individual exterior entrances
- Generous patio or balcony
- Carports available
- Pet-friendly

Vibrant Community

- Sparkling swimming pool and spa
- Clubhouse and fully-equipped exercise facility
- Volleyball court
- Children's playground
- Acclaimed Ann Arbor school district
- Car washing area

Choice Location

- Close to the University of Michigan and Eastern Michigan University
- Great Pittsfield Township area parks and golf courses
- Prime access to I-94, US-23 and Michigan Avenue
- Nearby shopping, including Briarwood and Arborland Malls
- Amidst an abundance of dining and entertainment opportunities
- Convenient access to banks, medical facilities and more
- Moments from Ann Arbor Municipal Airport and a short drive to Detroit Metro Airport



OFFICE: 5825 Plum Hollow Dr.
Ypsilanti, Michigan 48197

PHONE: 734-434-6650
FAX: 734-434-7538